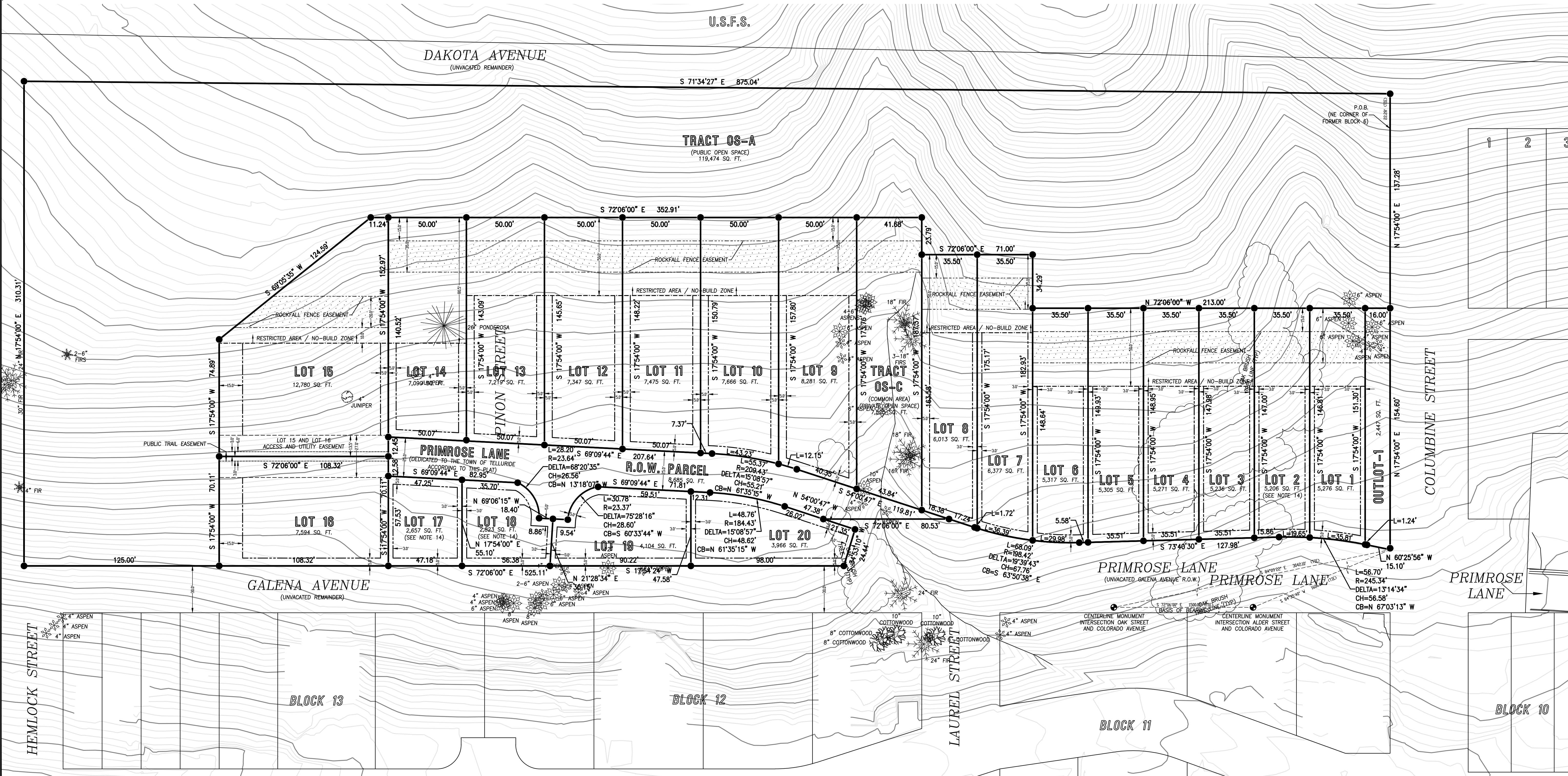
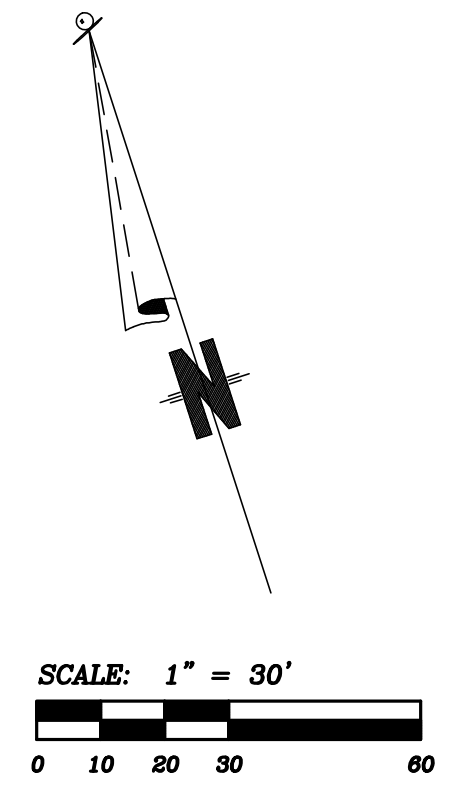


EXHIBIT
 THE OVERLOOK AT TELLURIDE SUBDIVISION / P.U.D.
 A LARGE SCALE SUBDIVISION OF PORTIONS OF EAST TELLURIDE ADDITION TO THE TOWN OF TELLURIDE,
 LOCATED WITHIN SECTION 36, T.43N, R.9W, N.M.P.M, SAN MIGUEL COUNTY, COLORADO.

LINETYPE LEGEND	
	PROPERTY LINE
	SETBACK LINE
	BOUNDARY OF RESTRICTED AREA / NO-BUILD ZONE (SEE NOTES 10-13)
	ROCKFALL FENCE EASEMENT (SEE NOTE 17)
	LOT 15 AND LOT 16 ACCESS AND UTILITY EASEMENT (SEE NOTE 16)
	PUBLIC TRAIL EASEMENT (SEE NOTE 15)



Project Mgr:	DB	Rev.	description	date	by
Technician:	MC				
Checked by:					
Start date:	08/07/2018				

970-728-6153 970-728-6050 fax
 P.O. BOX 1385
 125 W. PACIFIC, SUITE B-1
 TELLURIDE, COLORADO 81435
 Drawing path: d:\g\Windhorse Sub 2017\Contour-Tree Ex 08-18.dwg Sheet 1 of 1 Project #: 08014

F:\04\Jobs\08252018\08014.dwg Windhorse Subdivision 2017\08014 Contour and Tree Exhibit 08-18.dwg 8/7/2018 3:10:10 PM, PC3